

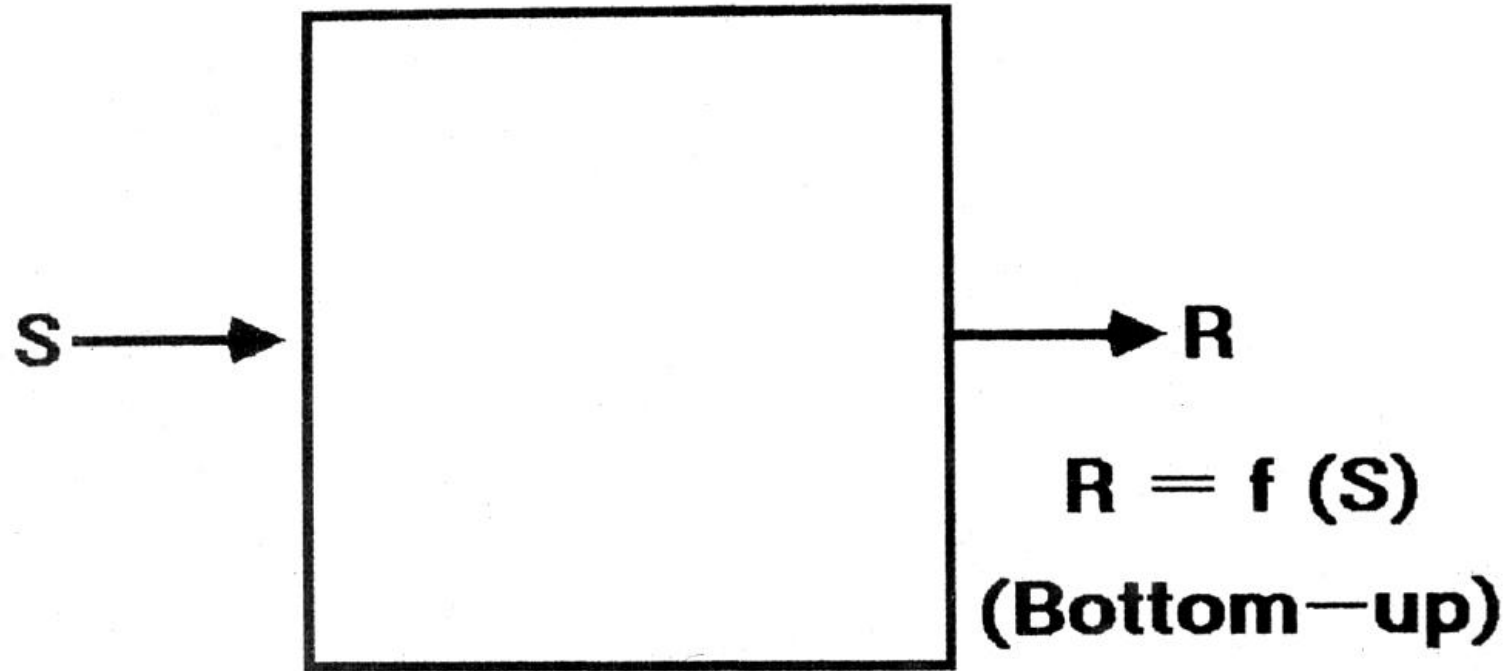
Zum Entscheiden geboren

Hirnforschung für Manager

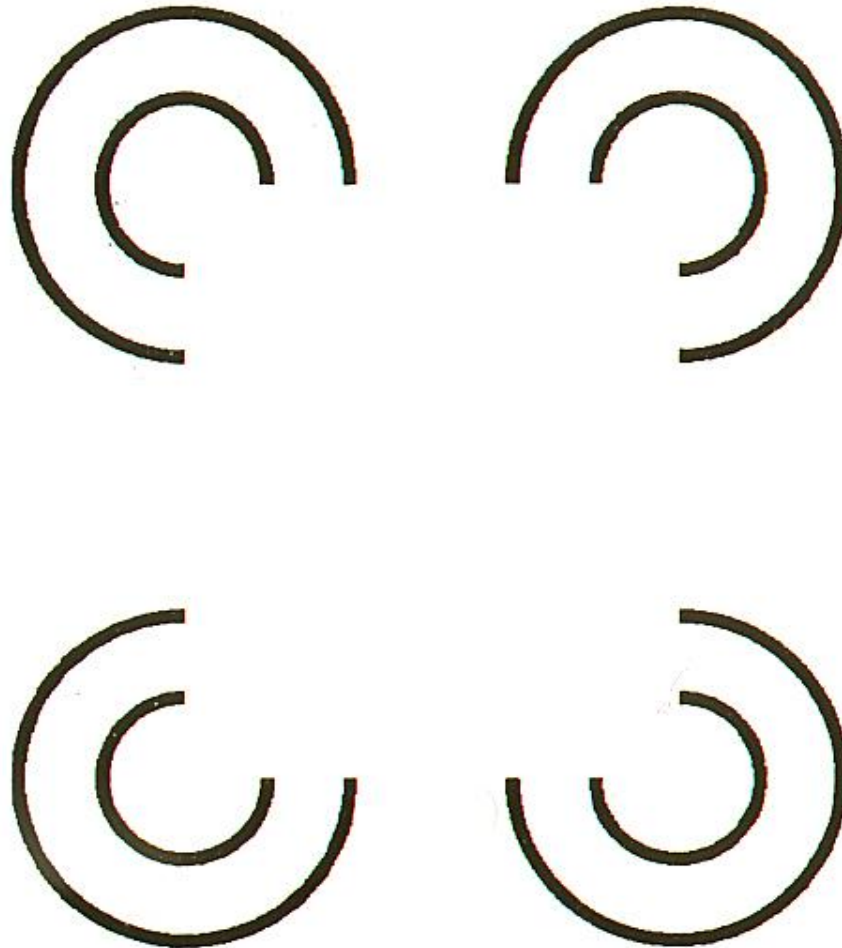
Prof. Dr. Ernst Pöppel, ML

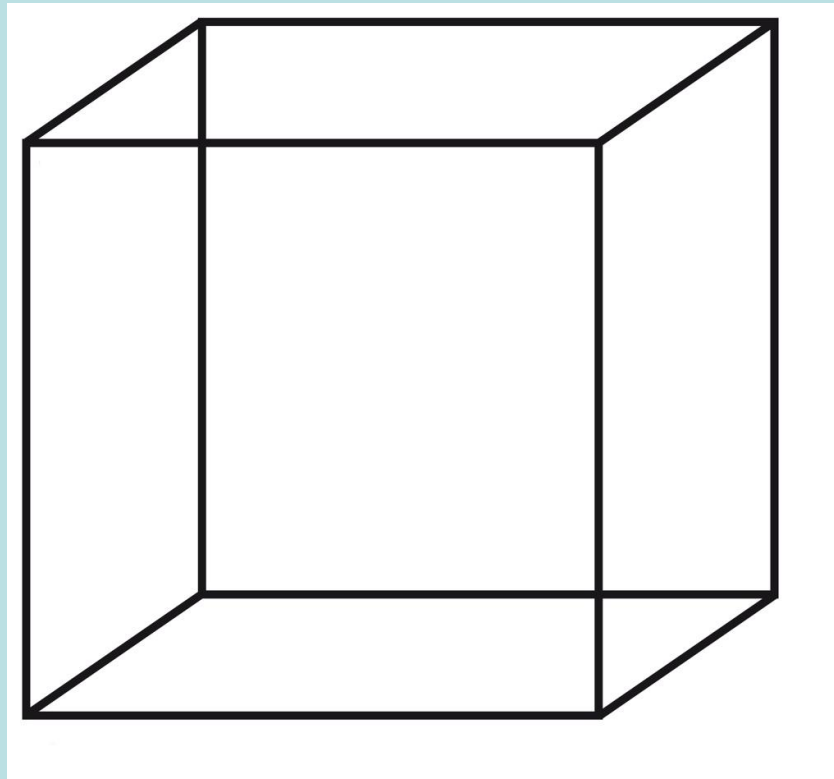
Skolamed Health on Top auf dem Petersberg

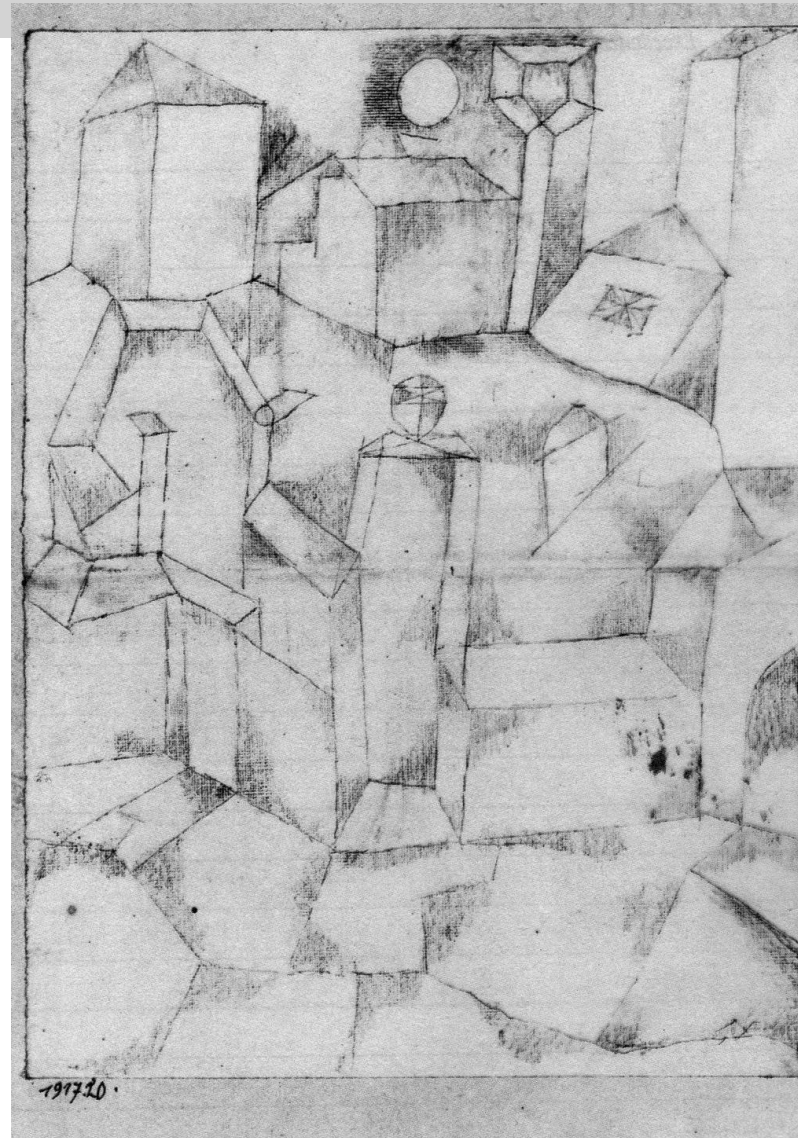
17. März 2009



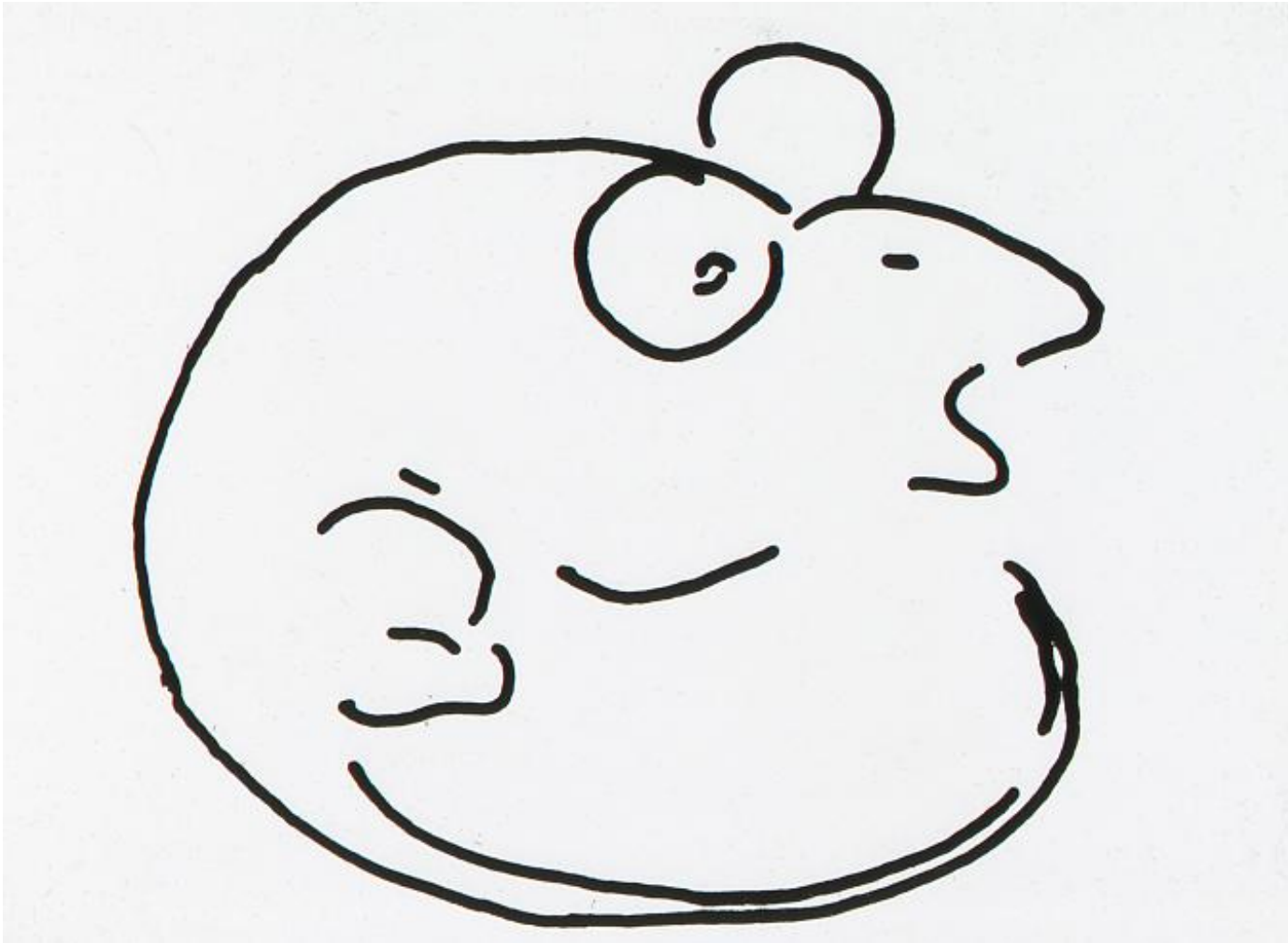
Cartesian Concept



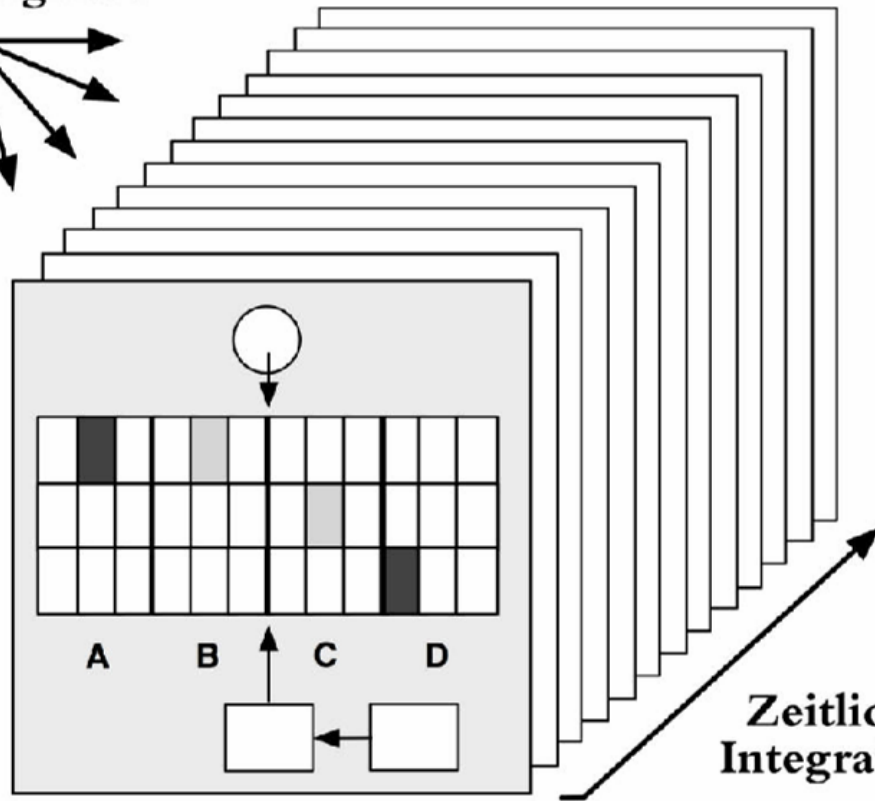




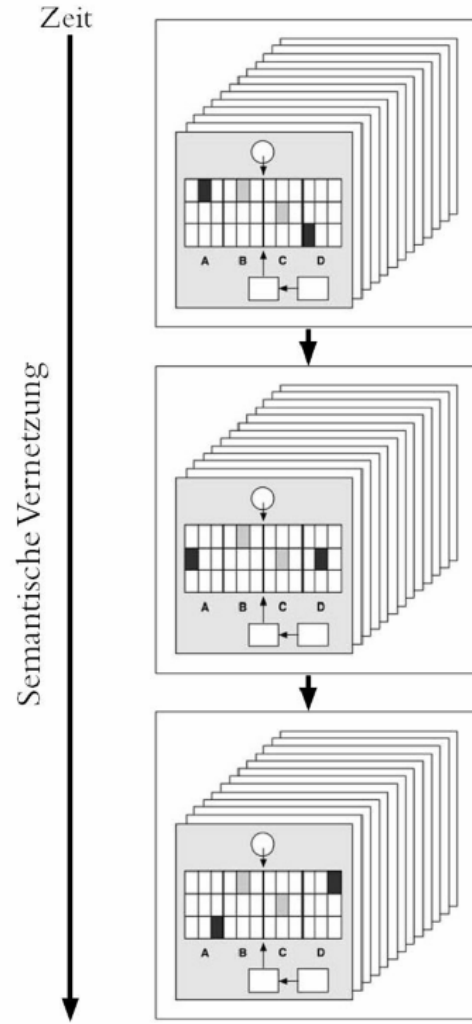
Paul Klee

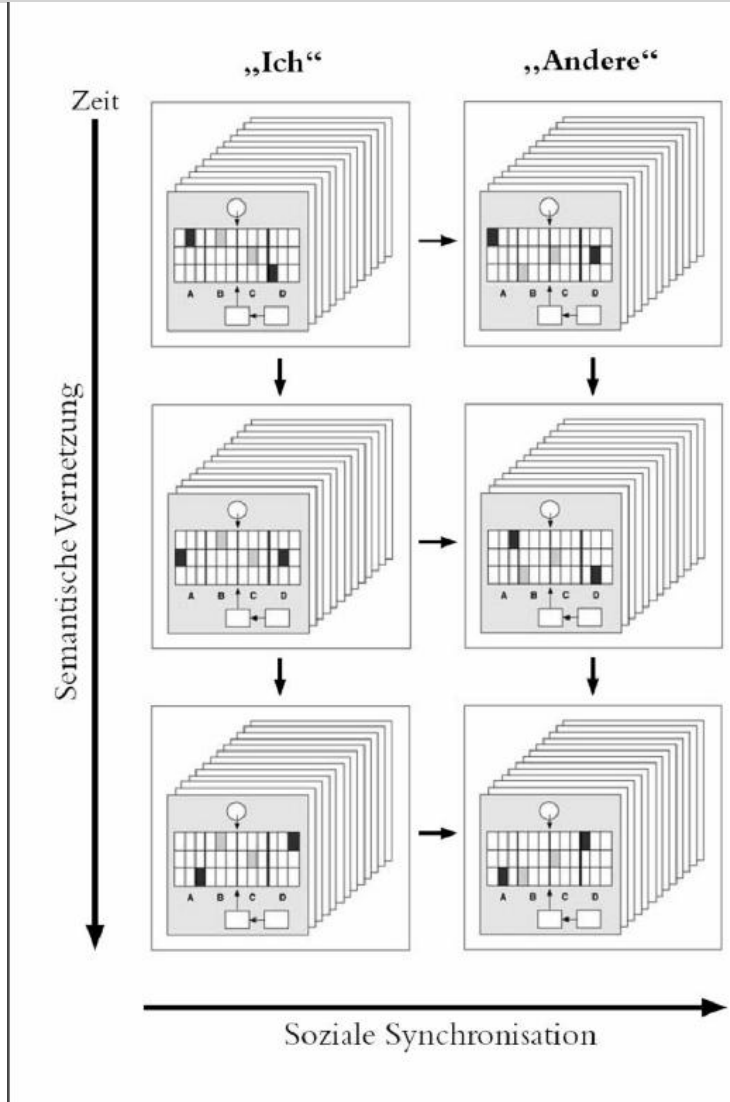


Ereignisse



**Zeitliche
Integration**

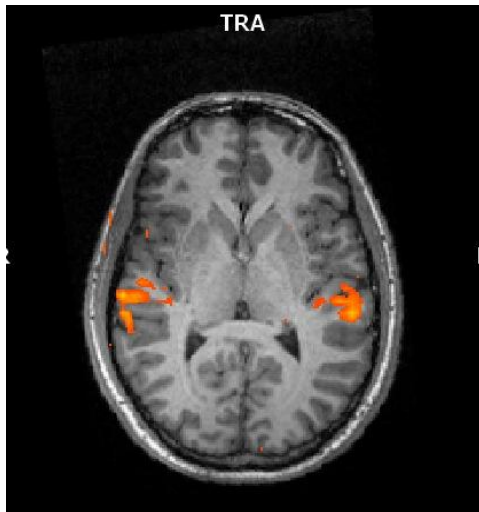




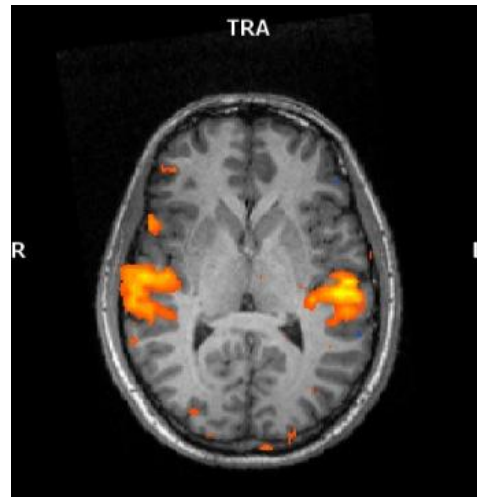


Richard Wagner - Beginning of the Flying Dutchman

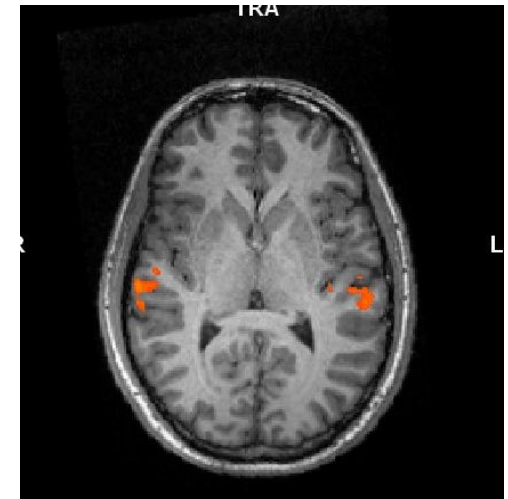




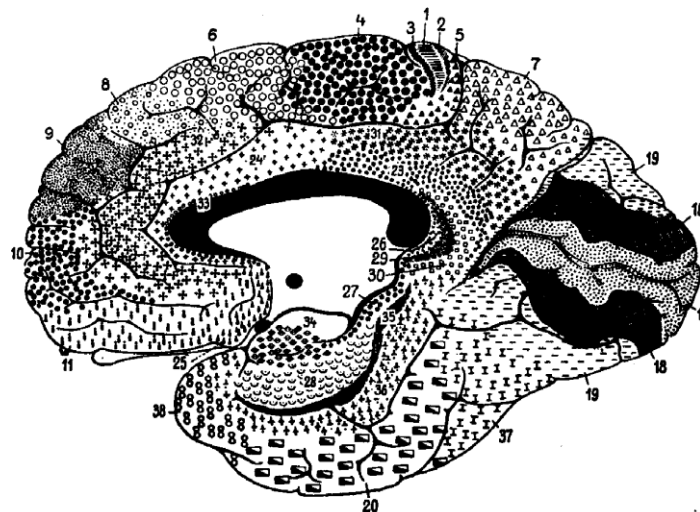
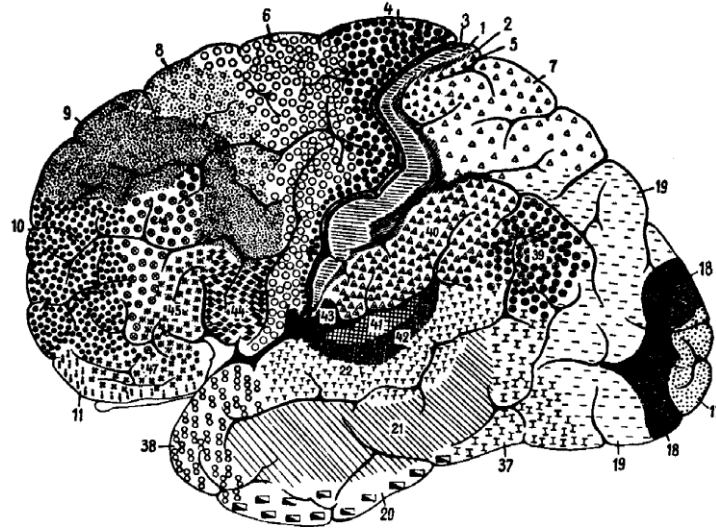
too slow

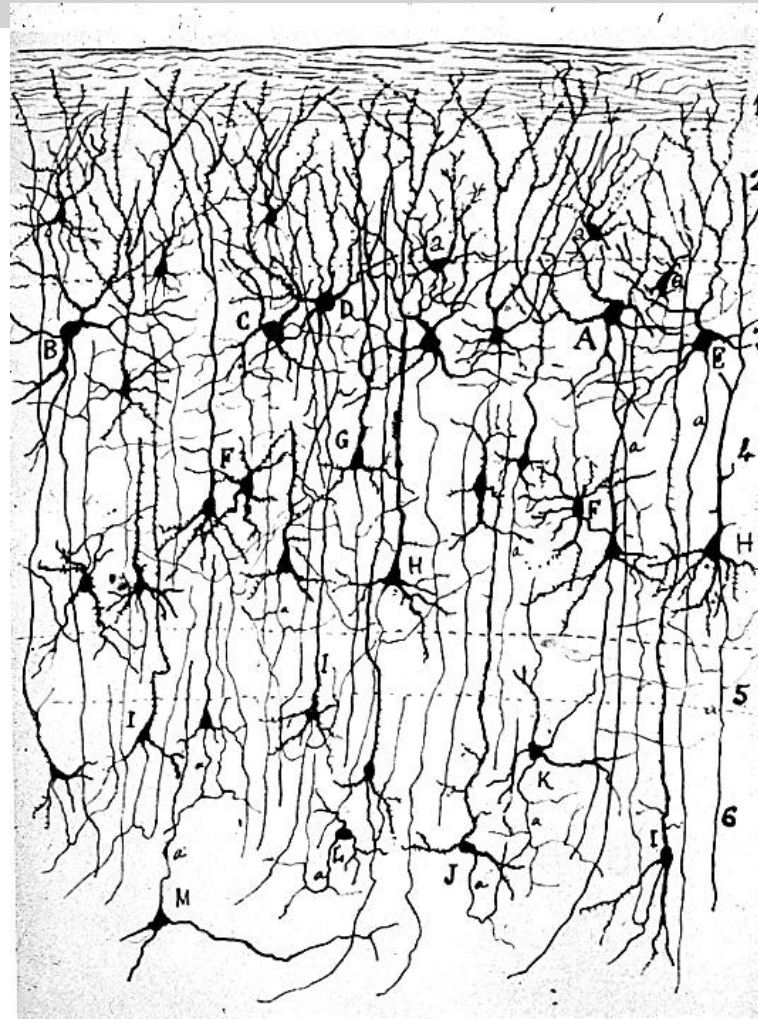


“3-second” tempo



too fast



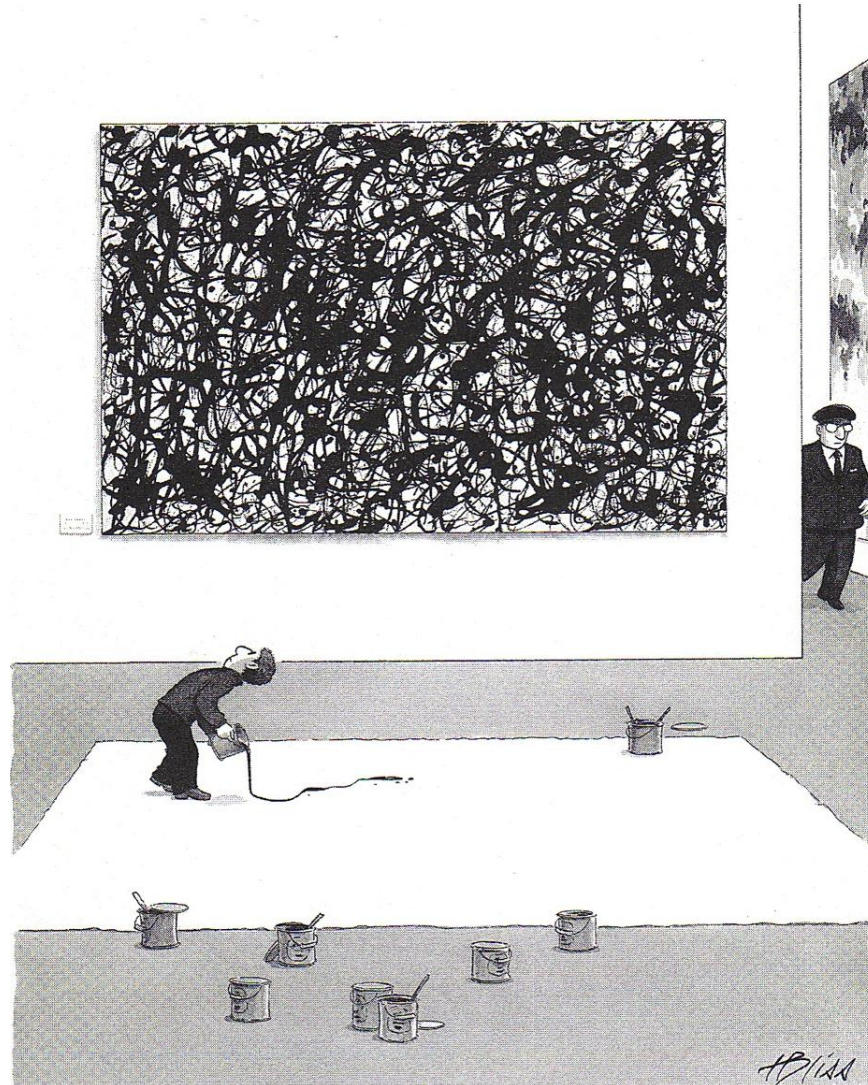


GOLGI-STAINED NERVE TISSUE from the visual cortex of a rat was sketched by Cajal in 1888. The numbers along the right-hand margin identify cellular layers; the capital letters label individual neurons. One of Cajal's most important contributions to neurobiology was to establish the neuron as a discrete, well-defined cell rather than as part of a continuous network.

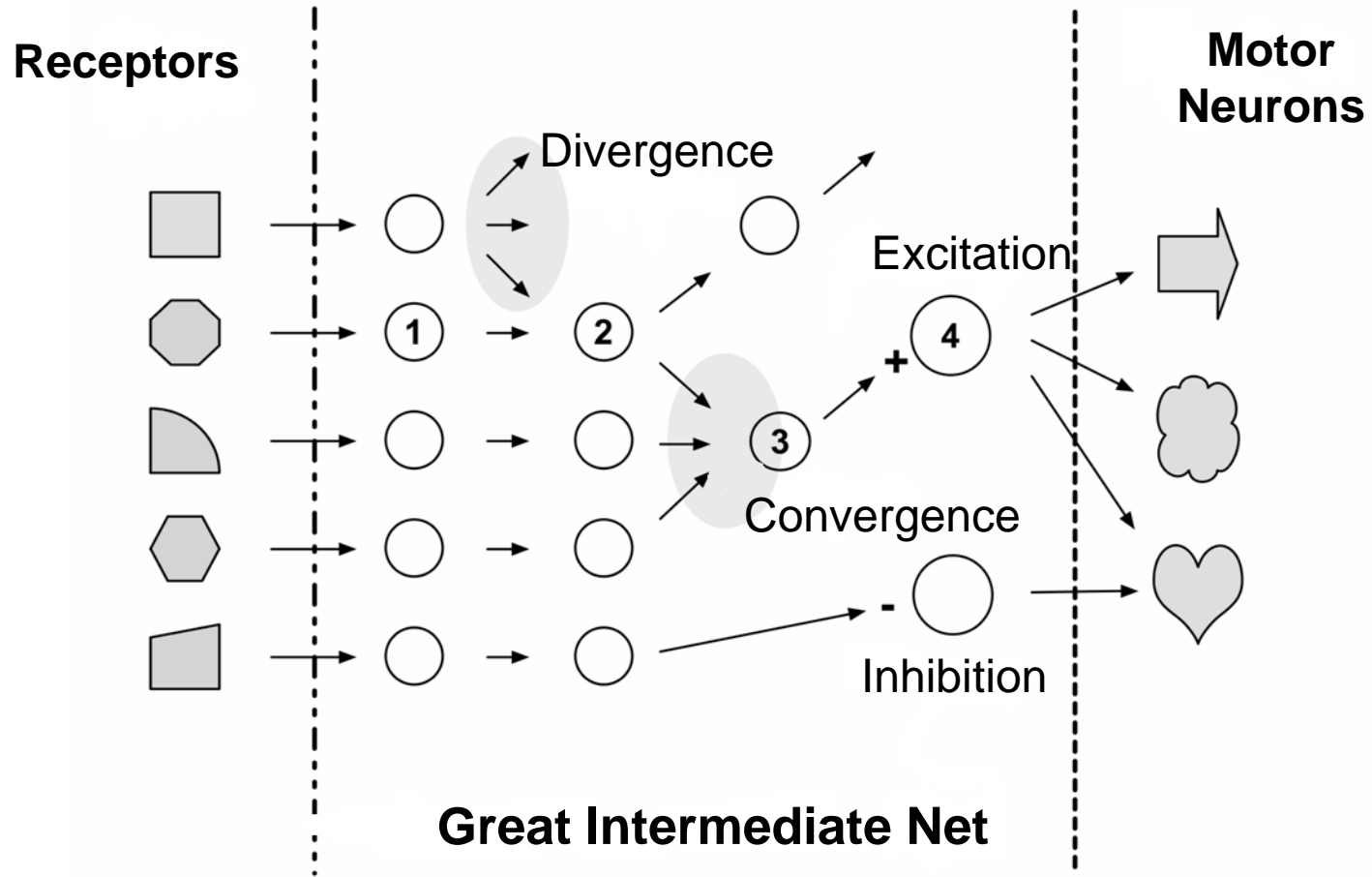
Ramón y Cajal

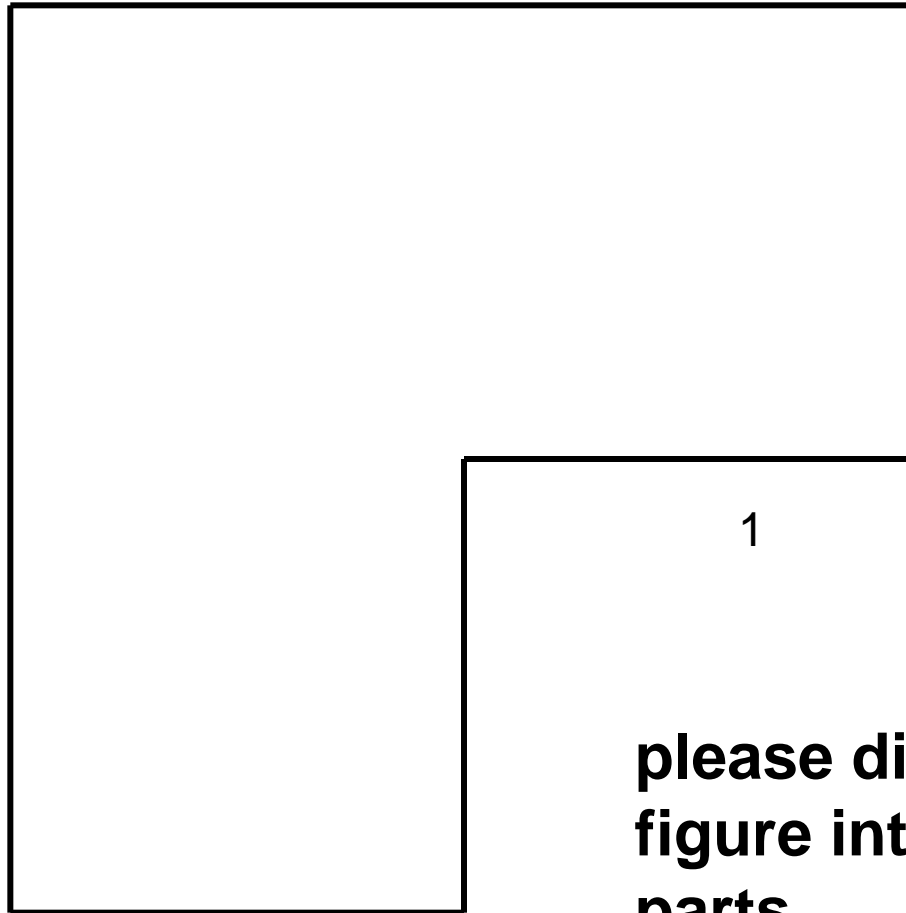


J. Pollock

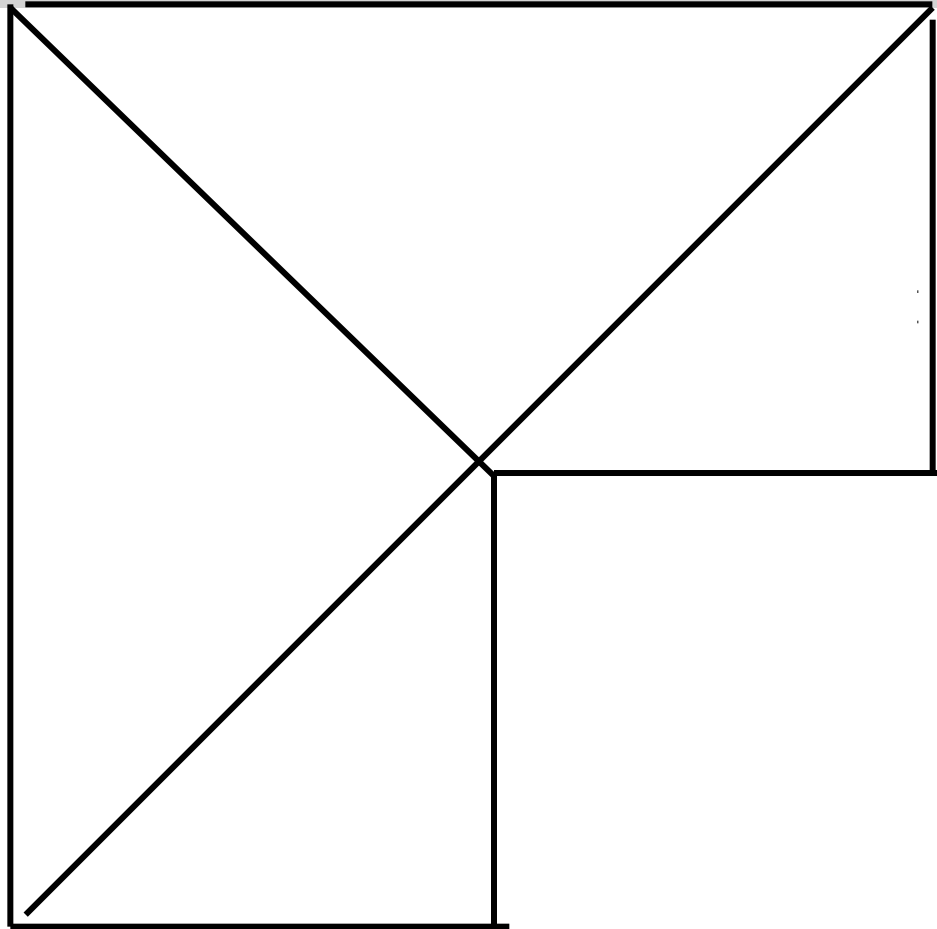


„New Yorker“

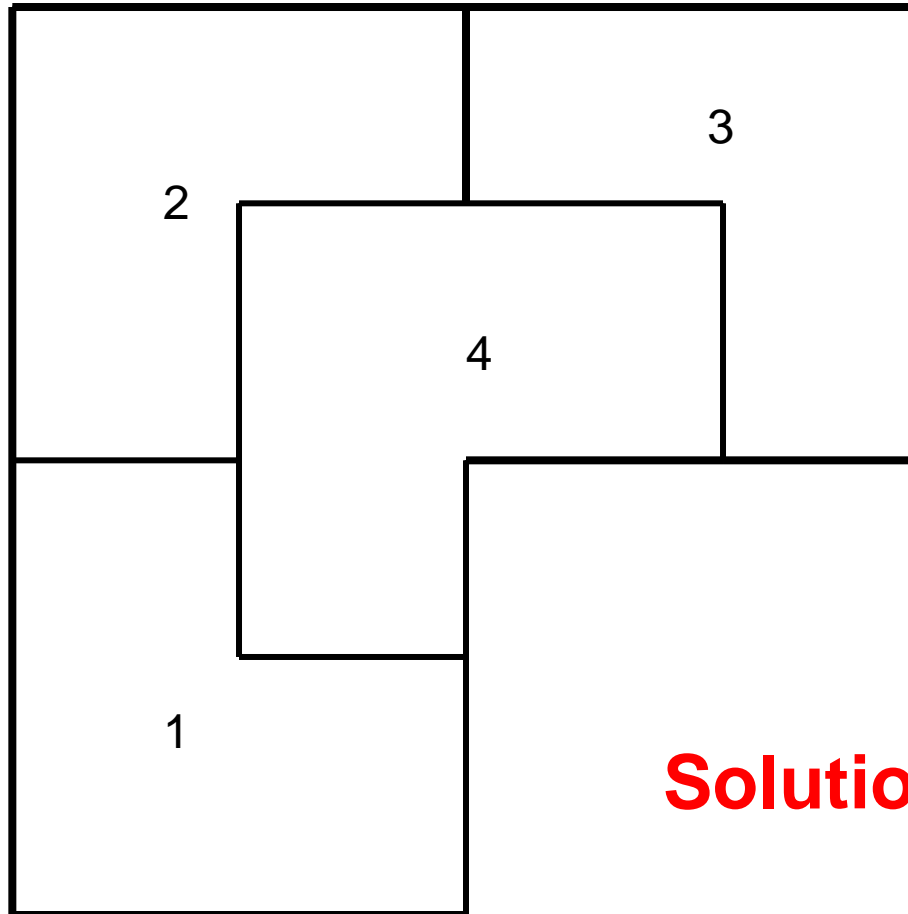




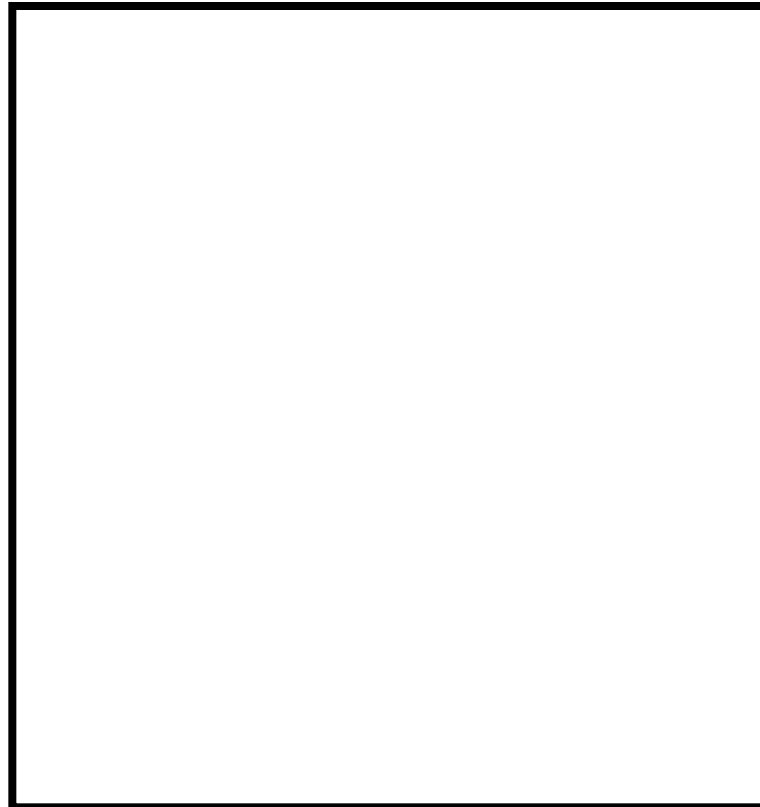
please divide up this figure into **4** identical parts



This is not the solution!



Solution !

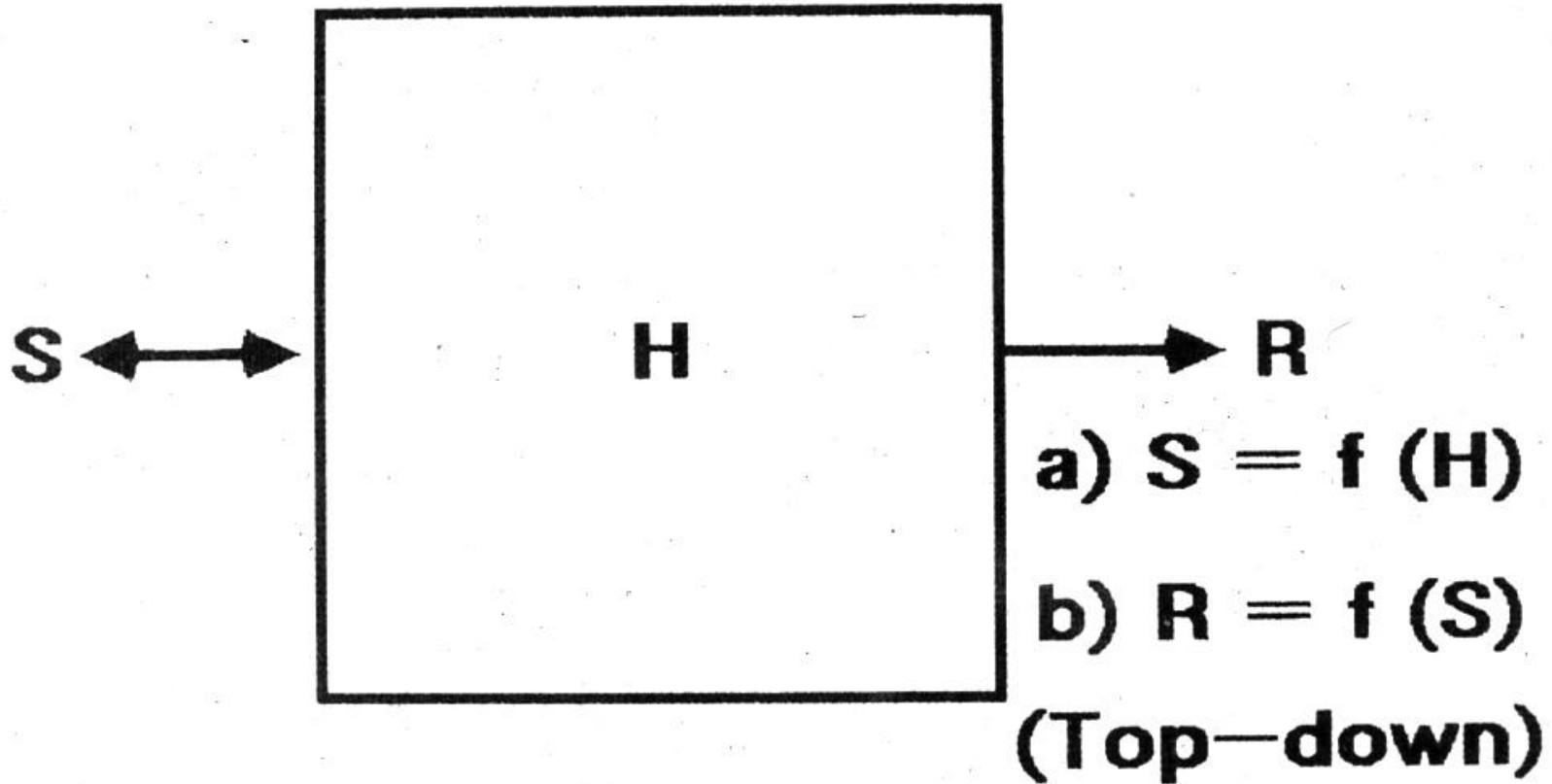


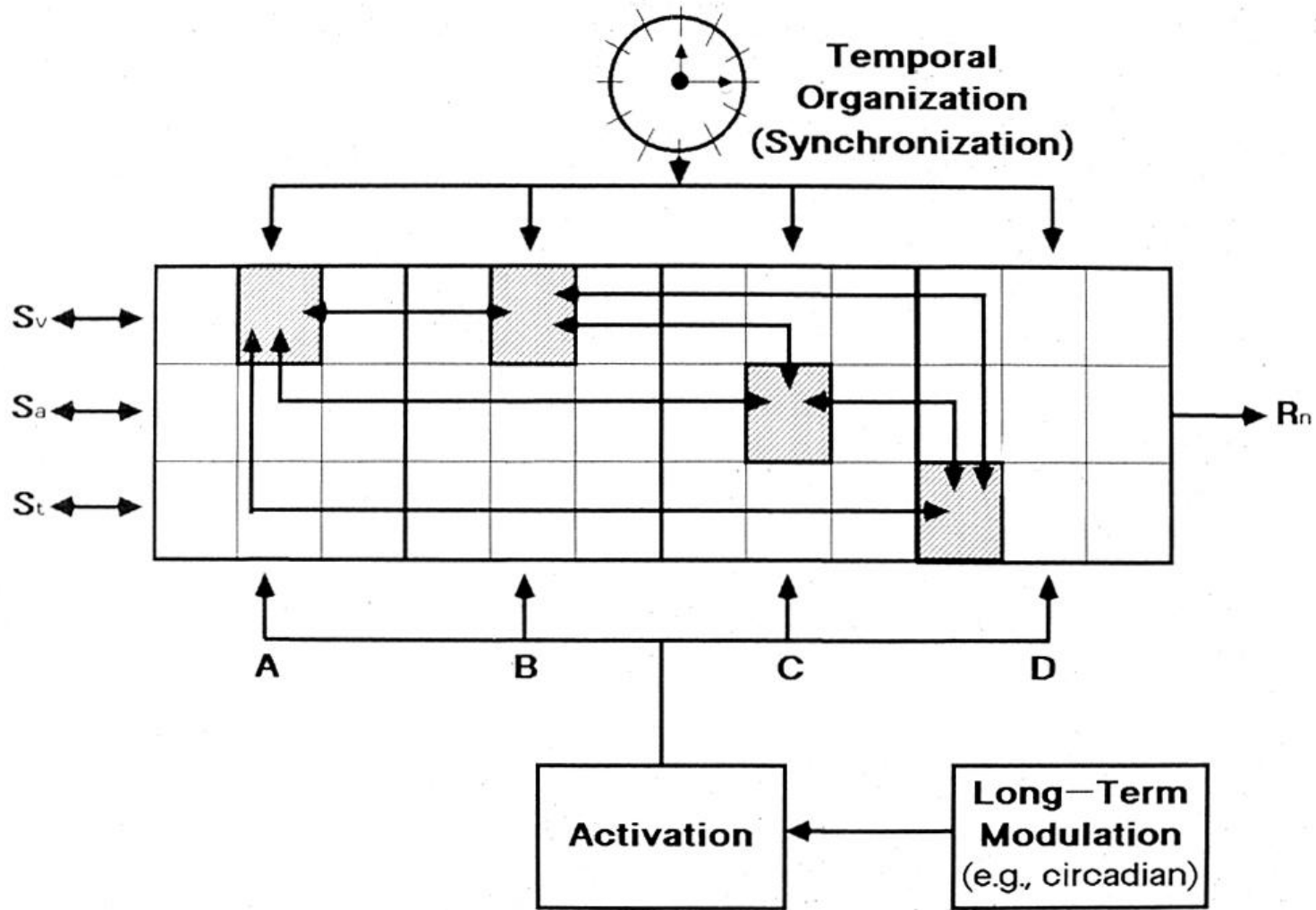
Please divide up this figure into **5** identical parts



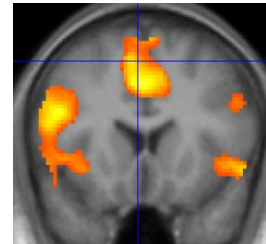
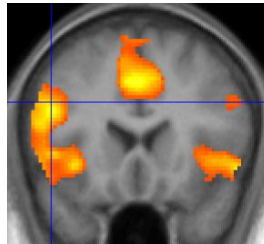
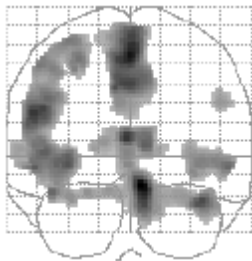
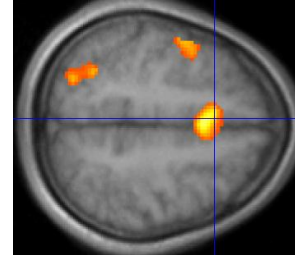
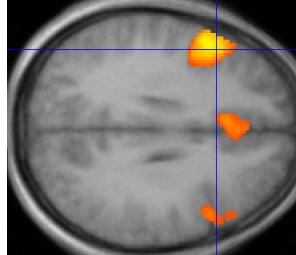
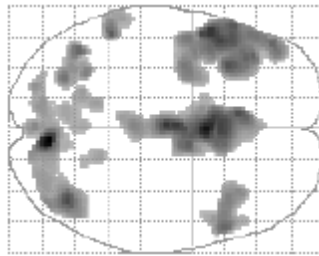
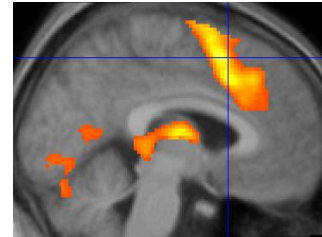
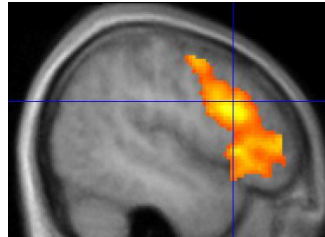
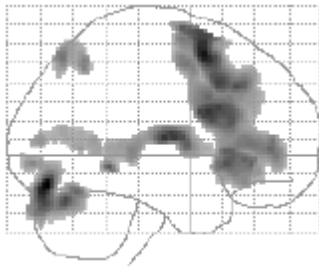
| | | | | |
|--|--|--|--|--|
| | | | | |
|--|--|--|--|--|

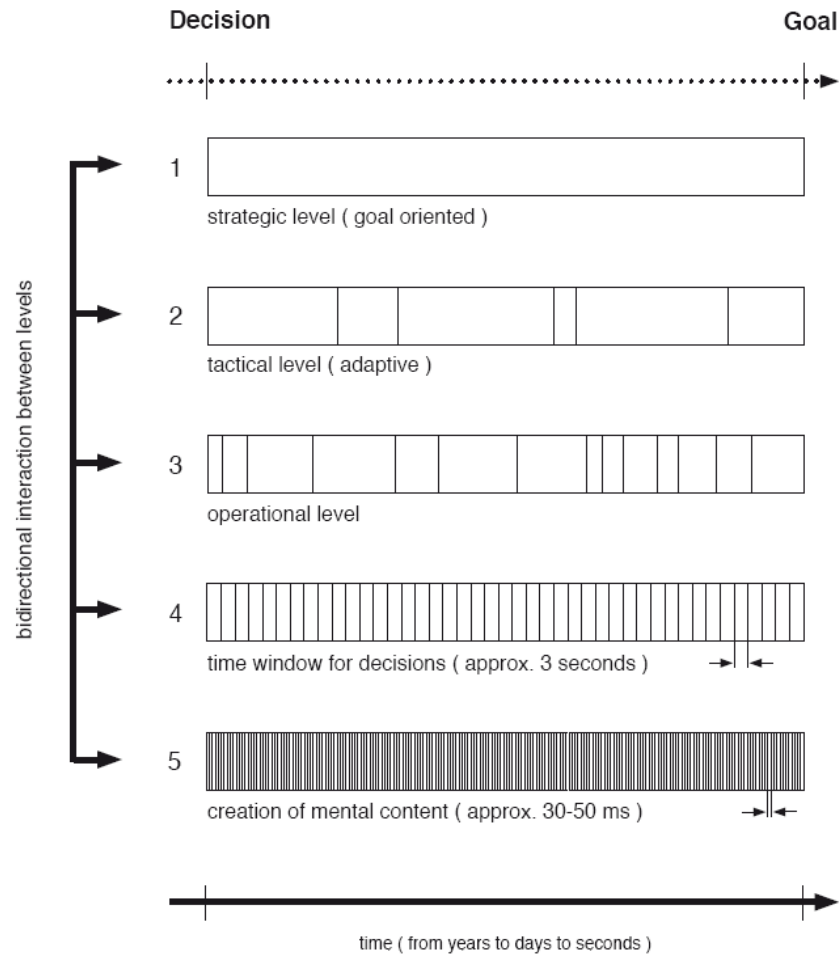
Solution !





Brain Activations during Decisions







S. Dalí

E-Pyramid

